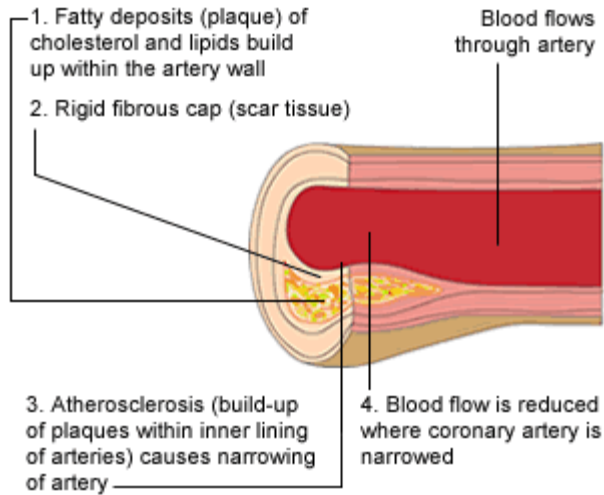


Cholesterol and your arteries

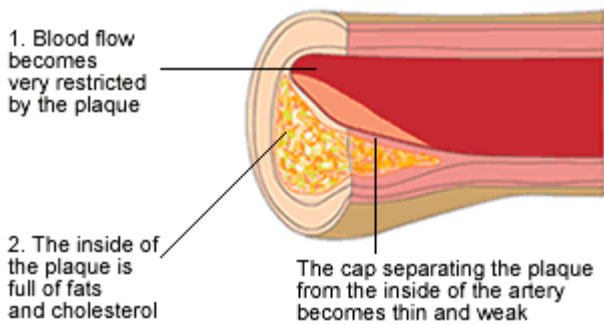
These 3 diagrams show how a build-up of cholesterol can damage and block your arteries.



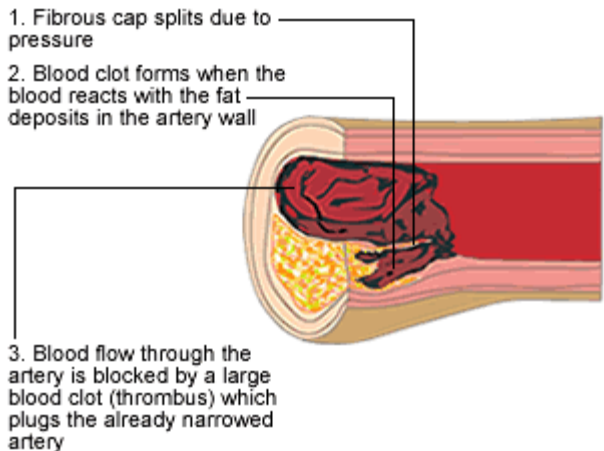
1. Plaque builds up in an artery



2. The plaque gets bigger and unstable



3. The plaque ruptures and a blood clot blocks artery (thrombosis)



Last Reviewed: 16/08/2009

Reproduced from www.mydr.com.au. Copyright: myDr, UBM Medica Australia, 2000-2011. All rights reserved.

The material provided by UBM Medica Australia Pty Ltd is intended for Australian residents only, is of a general nature and is provided for information purposes only. The material is not a substitute for independent professional medical advice from a qualified health care professional. It is not intended to be used by anyone to diagnose, treat, cure or prevent any disease or medical condition. No person should act in reliance solely on any statement contained in the material provided, and at all times should obtain specific advice from a qualified health care professional. UBM Medica Australia Pty Ltd, its servants and agents are not responsible for the continued currency of the material or for any errors, omissions or inaccuracies in the material, whether arising from negligence or otherwise, or from any other consequences arising there from.